

WORLD TUNNEL CONGRESS 2024

Tunnelling for a Better Life



Official Website



Sponsorship &
Exhibition Manual



Linkedin

19-25 April, 2024

Shenzhen, China

BROCHURE

Venue: Shenzhen World Exhibition & Convention Center
(No.1 Zhancheng Rd, Fuhai Street, Bao'an District, Shenzhen)

Official Website: www.wtc2024.cn

E-mail: info@wtc2024.cn

Hosted by



Organized by



Professional Congress Organizer



TABLE OF
CONTENT

- »» [Welcome Address](#) ▶01◀
- »» [Organizational Chart](#) ▶04◀
- »» [Organizing Committee](#) ▶05◀
- »» [Congress Theme & Topics](#) ▶06◀
- »» [Call For Abstracts](#) ▶07◀
- »» [Programme](#) ▶08◀
- »» [Venue Introduction](#) ▶10◀
- »» [Visit China](#) ▶12◀
- »» [Transportation](#) ▶14◀
- »» [Accommodation](#) ▶16◀
- »» [Technical Visits](#) ▶18◀
- »» [Sightseeing Routes](#) ▶24◀
- »» [Registration & Fees](#) ▶28◀
- »» [Exhibition & Fees](#) ▶29◀
- »» [Sponsorship Opportunities](#) ▶30◀
- »» [Contact us](#) ▶33◀

WELCOME ADDRESS

Distinguished colleagues and friends,

A great poet in ancient China once said, "A bosom friend afar brings a distant land near." It means that under the sky, we are all friends and neighbors. What brings us together here today is the common passion for tunnelling and underground space.

As an ITA member, the China Civil Engineering Society (CCES) was established in 1912 and currently has nearly 1,000 corporate members and 100,000 individual members. In the field of civil engineering, it is committed to promoting the development of technology and related disciplines, the popularization of science and technology, the cultivation of scientific and technological talents, and the close integration of economy with science & technology, thus making great contributions to the country's development.

The CCES joined ITA in 1979, and has been actively participating in ITA activities on behalf of China. In September 1990, China hosted the World Tunnel Congress and the 16th ITA General Assembly in Chengdu. It was the first time the conference was held in China. Besides, in November 2018, the 4th ITA Tunnelling Awards was held in Chuzhou, Anhui Province, China.

As is well-known, China is still a developing country, and its economic development relies heavily on infrastructure construction. The construction of tunnelling and underground works is one of the major tasks with huge potential for China to undertake. China has achieved a lot in the development of tunnels and underground spaces thanks to its unremitting efforts over many decades. At present, the total length of railway, highway and subway tunnels in operation in China adds up to 42,187 kilometers. There are also many major tunnel projects under construction, including TBM tunnels, immersed tube tunnels, subway tunnels, road tunnels, railway tunnels, underground utility tunnels and urban underground spaces, making China an ideal place to host the World Tunnel Congress.

Since its inception in 1974, ITA has made concerted efforts to provide its members with excellent platforms for learning and exchanges. Through WTC's, ITA Awards, training programs and publications, it has greatly promoted the improvement of global tunnelling activities and underground space use. China is one of the main beneficiaries of these ITA activities. Many countries and international experts have greatly assisted China over past few decades, and we will always remember with gratitude those friends who extended a helping hand to us. China's tunnelling and underground space sector still needs the support and help of the international community, especially that of ITA. It is a great honour for CCES to host WTC 2024 and ITA General Assembly, and CCES will be committed to promoting friendship and cooperation among ITA members, and improving tunnelling and underground space technology.

We look forward to seeing you all in Shenzhen, China in 2024!



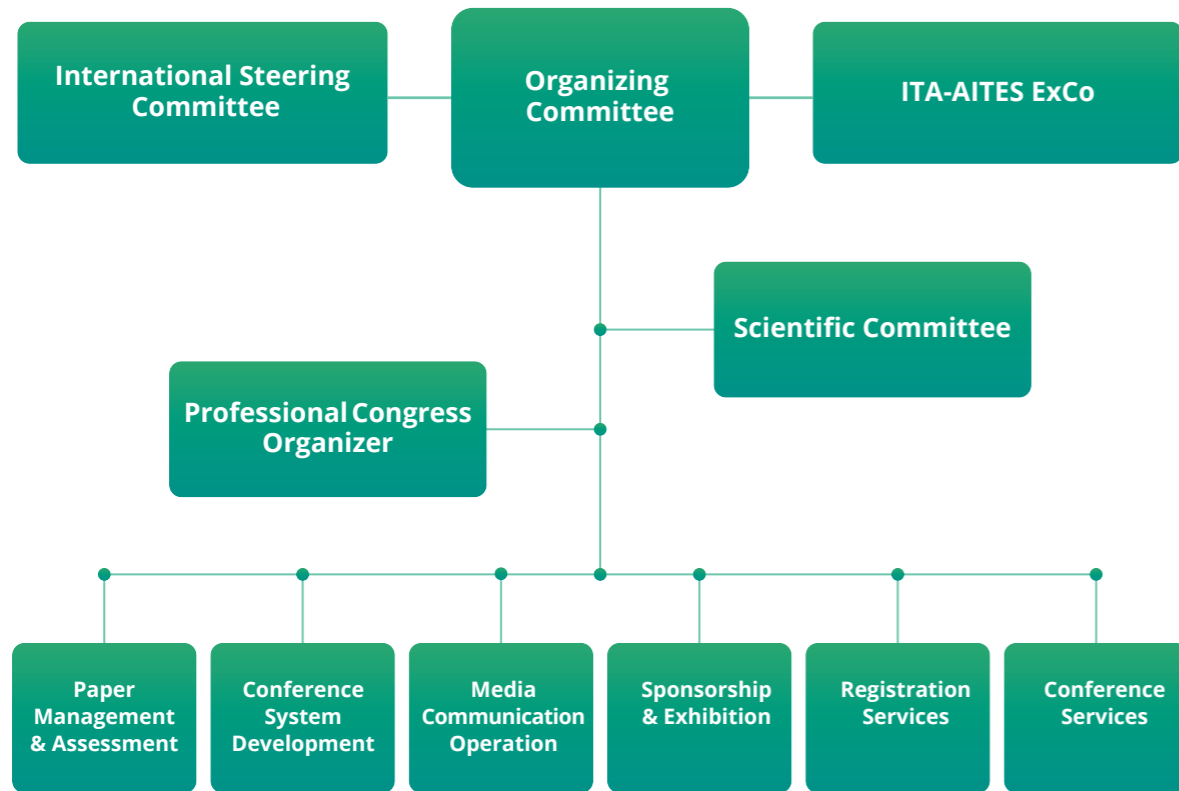
Yi Jun
President of
China Civil Engineering Society

*The WTC is being held in China again after a lapse of 34 years.
Shenzhen is a coastal city with high forest coverage, where you can enjoy
the warm sunshine, fresh air and beautiful scenery.
At a time of ITA's 50th anniversary, 20,000 square meters of exhibition
space, advanced tunnelling projects and wonderful social activities of
oriental characteristics will bring you the most unforgettable experience.
We welcome you all to Shenzhen in 2024.*

WTC 2024



ORGANIZATIONAL CHART



ORGANIZING COMMITTEE

- Yi Jun**

 - Chair of the Organizing Committee
 - President CCES
- Tang Zhong**

 - Co-chair of the Organizing Committee
 - President CCES-TUWB
- Olivier Vion**

 - Member of the Organizing Committee
 - Executive Director ITA
- Guo Shanyun**

 - Member of the Organizing Committee
 - President Emeritus CCES-TUWB
- Chen Xiangsheng**

 - Member of the Organizing Committee
 - Academician Chinese Academy of Engineering; Professor Shenzhen University
- Peng Liming**

 - Member of the Organizing Committee
 - Professor Central South University
- Lei Shengxiang**

 - Member of the Organizing Committee
 - Chief Engineer China Railway Construction Corporation Limited
- Feng Shouzhong**

 - Member of the Organizing Committee
 - Chairman Anhui Zhongyi New Material Technology Co., Ltd.
- Pei Liefeng**

 - Member of the Organizing Committee
 - General Manager/Senior Engineer Shanghai Tunnel Engineering Co., Ltd.
- Tan Zhongsheng**

 - Member of the Organizing Committee
 - Professor Beijing Jiaotong University
- Qiu Wenge**

 - Member of the Organizing Committee
 - Professor Southwest Jiaotong University
- Shang Chunming**

 - Co-chair of the Organizing Committee
 - Vice President CCES
- Yan Jinxiu**

 - Chair of WTC2024 Scientific Committee
 - Co-chair of WTC2024 Organizing Committee
- Li Mingan**

 - Member of the Organizing Committee
 - Secretary General CCES
- Zhu Hehua**

 - Academician Chinese Academy of Engineering
 - Member of the Organizing Committee
- Gao Wei**

 - Member of the Organizing Committee
 - Chairman China Railway Tunnel Group Co., Ltd.
- He Chuan**

 - Member of the Organizing Committee
 - Vice President/Professor Southwest Jiaotong University
- Zhu Weibin**

 - Member of the Organizing Committee
 - Chief Scientist/Senior Engineer Guangzhou Tunnel Shield Research Institute
- Hong Kairong**

 - Member of the Organizing Committee
 - Director/Senior Engineer State Key Laboratory of Shield Machine and Boring Technology
- Huang Hongwei**

 - Member of the Organizing Committee
 - Professor Tongji University
- Wang Bin**

 - Member of the Organizing Committee
 - Deputy Executive Editor Modern Tunnelling Technology
- Fu Helin**

 - Member of the Organizing Committee
 - Professor Central South University

CONGRESS THEME & TOPICS

Congress Theme

Tunnelling for a Better Life

Focus on the sustainability of tunnelling

To develop sustainably, the world needs more tunnels and underground works as sustainable, resilient, low-carbon, smart and safe solution to provide people with transportation services, shopping malls, parking lots, shelters from bad weather and facilities for waste disposal.

Energy-saving and eco-friendly, green and low-carbon

The congress will focus on the latest trends and development directions of tunnelling and underground engineering, look forward to the era of low-carbon environmental protection and intelligent technology, and provide a good platform for industry research, survey, design, construction methods and technology exchange with advanced information, digital and intelligent tools.

Promotion and application of intelligent construction technology

The conference will also provide an excellent opportunity for participants to showcase new materials, technologies, processes and equipment and to look into the future.

These new technologies and equipment will further enhance the value of tunnels and underground works in a highly efficient manner, advancing the industry and the society it serves.

Topics

- *Planning*
- *Survey*
- *Design*
- *Ground Stability*
- *Support and Lining*
- *Conventional Tunnelling*
- *Mechanized Tunnelling (TBM, shield)*
- *Waterproofing and Drainage*
- *Geological Prediction and Geophysical Prospecting*
- *Instrumentation and Monitoring/Testing and Inspection*
Ventilation and Aerodynamics
- *Maintenance and Repair*
- *Operational Safety*
- *Tunnel Renovation and Upgrading*
- *Occupational Health and Safety*
- *New Materials*
- *Digital and Information Technology*
- *Immersed/Floating Tunnels*
- *Shafts*
- *Underground Caverns/Underground Space Use*
- *Contractual Practices and Risk Management*

CALL FOR ABSTRACTS

Submission deadline : 31 May 2023

ITA-AITES and the China Civil Engineering Society are calling for abstracts for the World Tunnel Congress 2024 (WTC2024) which will be held in Shenzhen, China, from 19-25 April 2024. The theme of WTC2024 is **Tunnelling for a Better Life**.

Abstracts Submission

- Submission deadline : **31 May 2023**
- The official language : *English*
- Maximum number of words : **300**
- Online submission system : <https://conference-service.com/wtc2024>
- Contact : wtc2024@tunnelcenter.cn
- Website : www.wtc2024.cn

Instructions for Authors

- Abstract submission for WTC2024 is only possible via the **online submission system**(<https://conference-service.com/wtc2024>). Abstracts submitted via e-mail, fax or other means of communication will not be accepted.
- Abstract Submission Deadline ends on 31 May 2023.
- The person who submits the abstract will be the main contact and must create an account to submit abstracts in the submission system.
- Please keep the email and password used to create the account for future reference and do not create multiple accounts.
- To submit your abstract please fill in all the required fields in the online submission form of the system. It is not required to upload an MS Word or PDF document file abstract.
- Abstract submissions are limited to text only (maximum number of words: 300). The online submission form will accept only text in the abstract field. No graphics, attachments or addenda will be considered.
- An abstract can be submitted for presentation at the WTC2024 as Oral or Poster presentation. However, the Technical Committee will decide about the type of presentation of each abstract contribution. This decision will be notified to the author.
- The author must assign the abstract to one of the topics of the WTC2024. The chosen topic by the author may be modified as a result of the reviewers' suggestion.
- In order to be published in the proceedings and presented either orally or as posters, registration is required.
- All abstracts will be reviewed by the Scientific Committee. The authors will be notified about the result of the review before 1 July 2023.
- If you need any assistance or have a query about online submission, you can contact us through the e-mail: wtc2024@tunnelcenter.cn

PROGRAMME

19 April (Friday)-25 April (Thursday), 2024

Time	19 April, Friday	20 April, Saturday	21 April, Sunday	22 April, Monday
07:30-08:00	ITA-CET Training course registration	ITA-CET Training course registration		Author's coffee time
08:00-08:30				
08:30-09:00	ITA-CET Training Courses	ITA-CET Training Courses	ITA-AITES ExCo Meeting	Opening Ceremony
09:00-09:30				
09:30-10:00				
10:00-10:30				
10:30-11:00				
11:00-11:30				
11:30-12:00				
12:00-12:30	Lunch	Lunch	Lunch	Keynote Lectures
12:30-13:00				
13:00-13:30	ITA-CET Training Courses	ITA-CET Training Courses	ITA EXCO + WG Animateurs+ Committee Chairs	WGs Meetings
13:30-14:00				
14:00-14:30				
14:30-15:00				
15:00-15:30				
15:30-16:00				
16:00-16:30				
16:30-17:00	WGs Meetings	WGs Meetings	WGs Meetings	Technical Sessions
17:00-17:30				
17:30-18:00				
18:00-18:30				
18:30-19:00	ITA-AITES Reception	WTC 2024 Welcome Reception	ITAtech Industry Dinner	
19:00-19:30				
19:30-20:00				
20:00-20:30				
20:30-21:00				
21:00-21:30				
21:30-22:00				
22:00-22:30				

- The duration of the technical session will be 3.5h in the morning and 3h in the afternoon.
- Five conference rooms are prepared to accommodate parallel technical sessions, which are located on the same level, within two-minute walk from each other.

Time	23 April, Tuesday	24 April, Wednesday	25 April, Thursday
07:30-08:00			
08:00-08:30			Author's coffee time
08:30-09:00	ITA 50 th Anniversary	Technical Sessions	ITA YM General Meeting
09:00-09:30			
09:30-10:00			
10:00-10:30			
10:30-11:00			
11:00-11:30			
11:30-12:00			
12:00-12:30	Lunch	Lunch	Lunch
12:30-13:00			
13:00-13:30	ITAtch AG Meetings	Technical Sessions	ITA General Assembly
13:30-14:00			
14:00-14:30			
14:30-15:00			
15:00-15:30			
15:30-16:00			
16:00-16:30			
16:30-17:00	Technical Sessions	Technical Sessions	Technical Sessions
17:00-17:30			
17:30-18:00		Closing Ceremony	
18:00-18:30			
18:30-19:00	2027 Member Nations Candidature Event & Cultural Dinner	ITA YM Networking Event	Congress Gala Dinner
19:00-19:30			
19:30-20:00			
20:00-20:30			
20:30-21:00			
21:00-21:30			
21:30-22:00			
22:00-22:30			

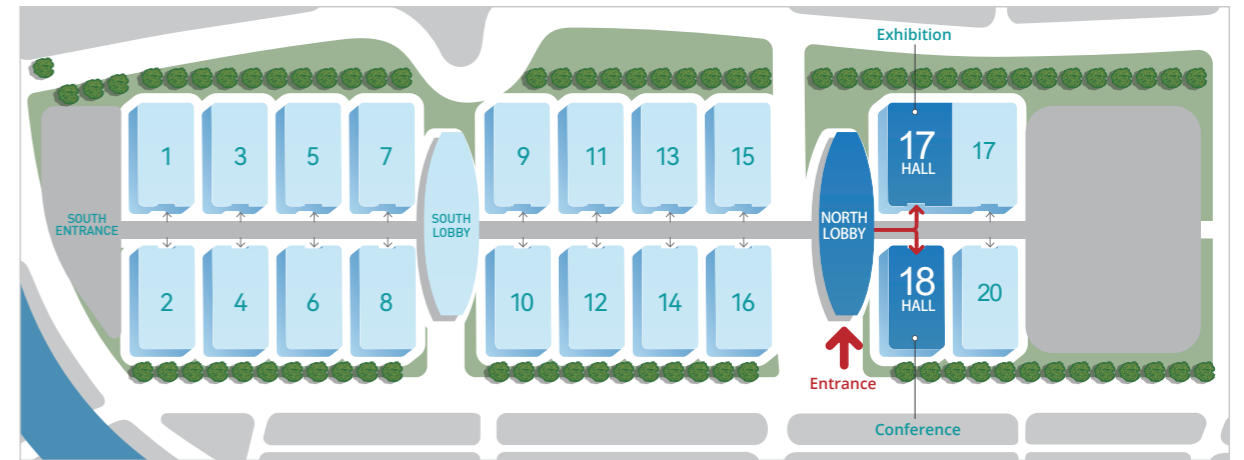
VENUE INTRODUCTION

Shenzhen World Exhibition & Convention Center

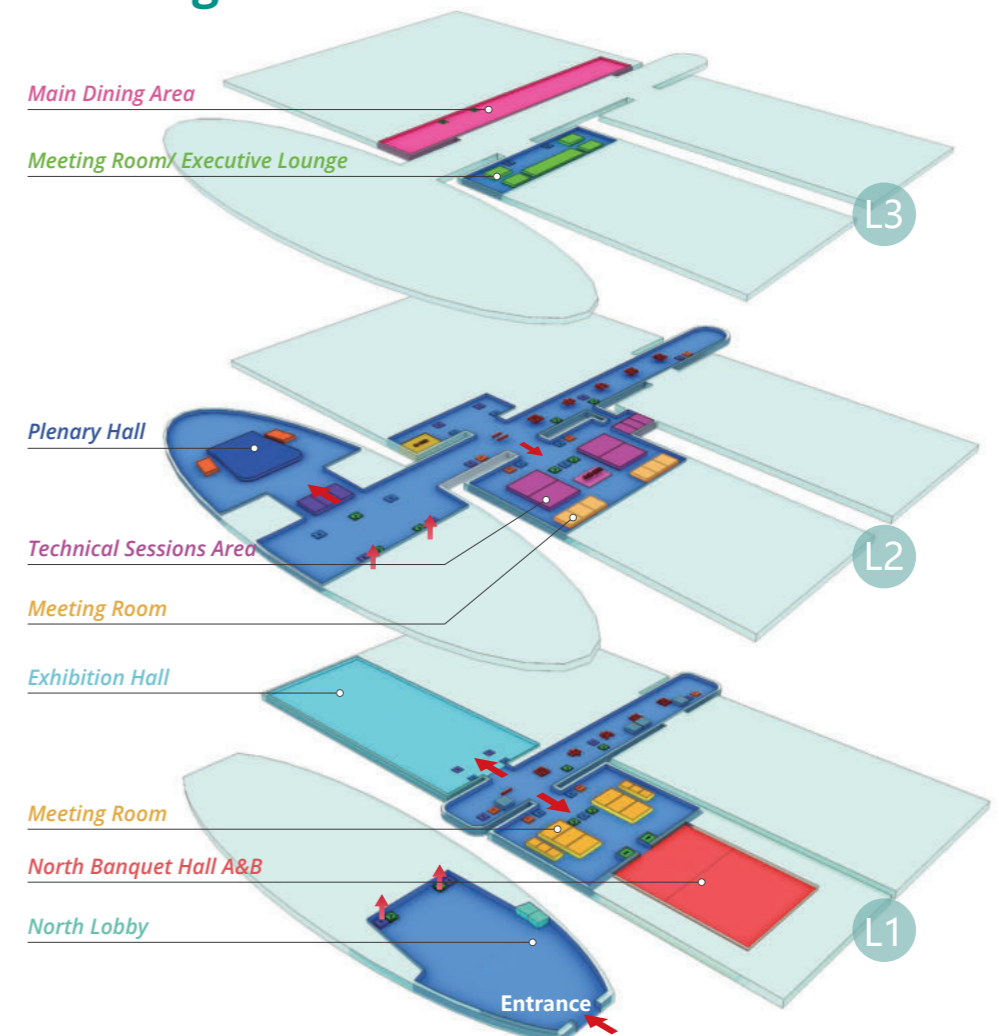
Shenzhen World Exhibition & Convention Center ("Shenzhen World") is a landmark building in the Greater Bay Area. It is a mega exhibition and convention complex integrating exhibitions, conferences, events and catering. Moreover, it is also the first convention center with full 5G coverage around the world. Shenzhen World has more than 150 meeting spaces with an indoor area of 400,000㎡, including Large Plenary Halls, Indoor and Outdoor Exhibition Halls, Small and Medium-sized conference rooms, banquet halls etc., which can be customized and combined, and can accommodate up to 10,000 people.

Date	Conference	Scale	Venue
April 19 th Fri	ITA-CET Training Courses	200	L2: CC201A
April 20 th Sat	ITA-AITES ExCo Meeting	20-30	L2: Media centerA
	ExCo Meeting/Committee Chairs/WGs Animateurs	20-30	L2: Media centerA
	ITA-CET Training Courses	350-450	L2: CC201A
April 21 th Sun	ITA-AITES Reception	200-300	Roof Top Garden/Outside Venue
	ITA General Assembly	300	L1: North Banquet Hall B
	WGs Meetings	27-96	L1~L2
April 22 th Mon	Welcome Reception	2000-3000	L1: North Banquet Hall A+foyer
	Opening Ceremony Keynote Lectures	1700	L1: Plenary Hall
	WGs Meetings	27-96	L1~L2
	Technical Sessions	350-450	L2:CC201A/201B/204A/204B/207A&B
	ITAtch Industry Dinner	300	Outside venue
April 23 th Tue	Speaker's Preparation Room Press & Interview Room	100-120	L2: CC207C
	ITA 50th Anniversary	1700	L1: Plenary Hall
	ITAtch AG Meetings	100-120	L2: Media centerA+B
	Technical Sessions	350-450	L2:CC201A/201B/204A/204B/207A&B
	ITA YM Networking Event	200-300	L3 of Hall 20 lounge/Outside Venue
	Member Nations Candidature Event & Cultural Dinner	300	Outside venue
April 24 th Wed	Speaker's Preparation Room Press & Interview Room	100-200	L2: CC207C
	Technical Sessions	3500-450	L2:CC201A/201B/204A/204B/207A&B
	ITA YM General Meeting	100-120	L2: Media centerA+B
	ITA General Assembly	300	L1: North Banquet Hall B
	Closing Ceremony	1500	L2 West: Plenary hall
	Congress Gala Dinner	1000	HALL 20
April 25 th Thur	Speaker's Preparation Room Press & Interview Room	100-200	L2: CC207C
	Technical Visits	30-100	One-day/Half-day Visit

Exhibition hall specific area location



Venue Planning



VISIT CHINA

This is Shenzhen

The spring in 1979 was an extremely important time in China's development history, and it was in this season that Shenzhen was born. After decades of development, Shenzhen rises as a cosmopolitan city with global influence from a small fishing village on the margin.

Shenzhen masters the most advanced technologies and makes great progress in areas such as 5G, IoT and AI. It has been said that Shenzhen is a "Chinese miracle", which shows the incredible "Shenzhen speed". While leading the modernization of the city, Shenzhen also focuses on promoting Chinese characteristics, establishing a Chinese folk culture village and a large cultural tourism area with the theme of promoting the essence of Chinese culture, creating a vivid epitome of the intersection of Chinese culture and world civilization.

Shenzhen will show you the comfort and convenience of modern technology and also the charm of traditional culture, providing you with an experience full of surprises and a sense of style during the journey.



VISA

Most prospective participants need to obtain a visa to enter the People's Republic of China. To avoid uncertainty, it is advisable to apply as early as possible to allow sufficient time to obtain a visa.

Please note that the Visa Letter will be issued by the WTC2024 Organizing Committee after the participant has completed registration and payment.

For assistance in applying for a Visa Letter, please contact the WTC2024 Organizing Committee at info@wtc2024.cn.

Airline Ticket preferential policies

Airline Discount Program

WTC2024 has partnered with China Southern Airlines and Emirates Airline to offer special discounts on airline bookings for participants.



Specific Methods of Use

Participants can use the discount codes sent by WTC2024 to book their tickets on the websites of the above airlines.



Climate

Shenzhen is a beautiful and comfortable city with an average temperature of 24°C in April. It has one of the eight most spectacular coastline in China, forest coverage rate of 40.68% and green coverage rate of 50%.

Voltage

The supply voltage in China is 220V/50Hz. Large hotels provide adapters and converters for guests.

Time zone

UTC+8 is taken as the standard time in Shenzhen, which is 8 hours ahead of Greenwich Mean Time, 6-8 hours ahead of Central European Time and 13 hours ahead of North America Eastern Standard Time.

Shopping and cuisine

Dubbed as "Shopping Paradise", Shenzhen offers a full range of options from world renowned brands to local specialties and from Western meals to local snacks. Shenzhen has a great variety of famous and quality local specialties including Shajing fresh oysters, Nanshan lychee, Xixiang greasyback shrimp, Fuyong flathead grey mullet, Nan'ao abalone, Shiyan Asian pear, Longgang sanhuang chicken, Pingshan Jingui orange, Xili mango, Songgang cured duck, Gongming roast goose, Guangming pigeon, and more than 150 indigenous medicinal materials.

Currency

The official currency is Renminbi (RMB). Calculation of equivalent foreign currency amount is based on exchange rate released by the People's Bank of China on the date of exchange.

TRANSPORTATION

✈ From Hong Kong International Airport to Shenzhen World Exhibition and Convention Center

Ferry

The SkyPier at Hong Kong International Airport offers services to Shekou Port and Fuyong Terminal in Shenzhen, where you can arrive by speedy ferry. There is free shuttle bus service between Fuyong Terminal and Shenzhen Airport, and participants can refer to Bao'an Airport for transportation to Shenzhen World Exhibition and Convention Center. Shekou Port is close to the Taiziwan Station on Metro Line 12, with 2 major bus stops nearby and access to 5 major bus routes.



Cross-boundary Coach

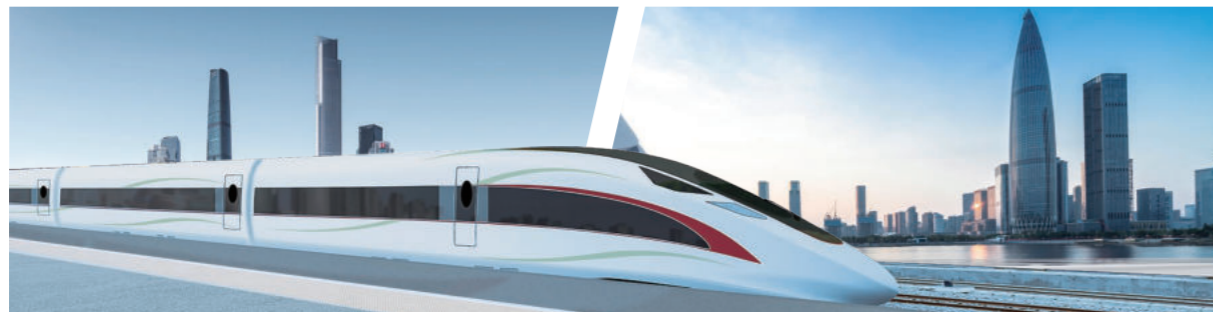
Cross-boundary Coach to Shenzhen is available at Terminal 1 of Hong Kong International Airport, and participants can take the coach directly to the Shenzhen Bay Port. The Shenzhen Bay Port is close to the Haiyue Station on Metro Line 2, where participants can go to the Shenzhen World Exhibition and Convention Center by metro.



✈ From Guangzhou Baiyun International Airport to Shenzhen World Exhibition and Convention Center

Railway

After arriving at Guangzhou Baiyun International Airport, participants can take a taxi or metro to Guangzhou East Station and then take the Guangzhou-Dongguan-Shenzhen Intercity Railway to Shenzhen Fuhai Station, where is close to the Fuhai Station on Line 12 with 5 bus stops nearby and 14 bus routes. There is a taxi pick-up area at the exit of Fuhai Station, so participants can take the metro, bus or taxi to the Shenzhen world Exhibition and Convention Center.



✈ From Shenzhen Bao'an International Airport to Shenzhen World Exhibition and Convention Center

Shenzhen Bao'an International Airport is approximately 19 km from the Shenzhen World Exhibition and Convention Center, which can be reached by metro, taxi or shuttle bus.

Metro:

Participants can go directly to the Airport Station and take the metro to the Shenzhen World Exhibition and Convention Center, which costs 20 minutes and around CNY¥4.00. The first metro departure time at the Airport Station is 6:00 am and the last one is at 00:00 pm.

Taxi:

Participants can go to the taxi waiting area at the airport to take a taxi. Blue-looking vehicles are regular Shenzhen taxis. It takes around ¥60-120 to take a taxi from the airport to the Shenzhen World Exhibition and Convention Center.

💎 Customized services

The Congress offers an customized & compensable car booking service for participants, including transfers to and from the airport and all-day charters. Sedan cars or van are available.

If you have any requests for customized services, please send your requirements to [service@wtc2024.cn] for further communication.

Transportation Around Exhibition and Convention Center

🚇 Metro:

Line 12 and Line 20 directly connect to the South Lobby and North Lobby of the venue. You can quickly travel to and from Shenzhen City and the Airport.

🚌 Shuttle bus:

Equipped with shuttle bus, directly linked to Tangwei Station of Line 11 and Airport. Shuttle bus services are provided to facilitate transportation between the venue and metro stations, bus terminals, business centers and hotels nearby.

🚌 Bus:

Shenzhen World Exhibition and Convention Center is surrounded by six bus stops and dozens of bus lines.

🚲 Bike Sharing:

A large number of shared bikes have been placed around the Shenzhen World Exhibition and Convention Center.

ACCOMMODATION

The Congress recommends hotels within a 20 km diameter of the exhibition halls for the participants. The hotels are divided into business hotels, three-star to five-star hotels. The total number of rooms is sufficient to meet participants' requirements.

Recommended hotels around the Venue				
Hotels	Distance	Time taking	Metro Station Nearby	Type
Hilton Shenzhen World Exhibition & Convention Center	0.2km	5 min on foot	/	★★★★★
Hilton Garden Inn Shenzhen World Exhibition & Convention Center	0.2km	5 min on foot	/	★★★★
InterContinental Shenzhen	0.5km	10 min by car	/	★★★★★
Crowne Plaza Shenzhen WECC	0.7km	10 min by car	/	★★★★★
Shenzhen Bao'an Airport	20km	30 min by car	Airport (15 min on foot)	★★★★★
Hyatt Place Shenzhen Airport	20km	30 min by car	Airport (15 min on foot)	★★★★

Other recommended hotels				
Hotels	Distance	Time taking	Metro Station Nearby	Type
Grand Skylight International Hotel Haoyue	6.2km	17 min by car	Waterlands Resort East (10 min on foot)	★★★★★
The Skytel Hotel Shenzhen World Exhibition & Convention Center	6.4km	18 min by car	/	★★★★
Venus Royal Hotel Shenzhen International Exhibition Center	6.6km	20 min by car	/	★★★★★
Courtyard by Marriott Shenzhen Northwest	7km	20 min by car	Fuyong (10 min on foot)	★★★★
Venus Royal Hotel	7km	20 min by car	Haoxiang (9 min on foot)	★★★★
Pullman Dongguan Chang'An Hotel	16.8km	24 min by car	/	★★★★
Babylon Hotel	14.8km	26 min by car	/	★★★★
Baolilai International Hotel	8.2km	30 min by car	/	★★★★★
Manjing Hualepin Hotel	16.7km	30 min by car	/	★★★★
Dongguang Richwood Garden Hotel	19.2km	38 min by car	/	★★★★★
Huihuang International Hotel Apartment (Bao'an International Convention and Exhibition Center Shop)	1.6km	8 min on foot	/	★★★
Shui'an International Apartment	2.8km	7 min by car	/	★★★
Deking International Hotel	2.5km	9 min by car	Fuhaixi (7 min on foot)	★★★
Vienna International Hotel (Shenzhen Fuyong Convention and Exhibition Center)	4.1km	13 min by car	/	★★★
Ranz Hotel	5.6km	17 min by car	Fuyong (7 min on foot)	★★★
Grand Skylight International Hotel Boke	6.2km	18 min by car	/	★★★
Hilton Garden Inn Shenzhen Bao'an	8.8km	23 min by car	/	★★★
Vienna International Hotel (Dongguan Binhaiwan Jiananlu)	16.3km	24 min by car	/	★★★
Lavande Hotel (Shenzhen World Exhibition & Convention Center Store)	2.2km	9 min by car	/	Business hotel
Vyluk Hotel (Shenzhen World Exhibition & Convention Center Store)	3.6km	11 min by car	/	Business hotel



TECHNICAL VISITS

In Shenzhen, 385km long metro lines (including 267 stations) have been built recently and some major projects are under construction.

| Shenzhen-Zhongshan Channel

Integrating "bridge, artificial island, tunnel and underground interchange", the 24.03km Shenzhen-Zhongshan Channel is a cutting-edge cross-sea channel project adopting the scheme of Tunnel on the east part and Bridge on the west part. The new structure of "steel shell+concrete" is used for the immersed tube, which has a large load-bearing capacity, good waterproof performance and significant social, economic and ecological value.

Project Features

- Overcoming challenges such as aviation height restrictions, wind-wave interactions, and complex geological conditions.
- The main span 1666 meters of three-span full floating system suspension bridge with 92 meters high.
- The East Artificial Island of this project is the world's first underwater interchange for highways.
- The first one in the world where steel shell concrete tubes are applied in large scale for the construction of eight-lane (in dual directions) immersed tube tunnel.



| The Pearl River Estuary Tunnel of Shenzhen-Jiangmen Railway

The 13.69km Pearl River Estuary Tunnel of Shenzhen-Jiangmen Railway is located in the Pearl River estuary between Guangzhou and Dongguan, which is the key project of the whole line of the Shenzhen-Jiangmen Railway and the ratio of bridges and tunnels is 98%.



Project Features

- Face challenges as long distance TBM tunnelling, great depth, high water pressure, complex geological conditions, and construction environment Hazards.
- With the deepest part of the tunnel being 115m below water and the maximum water pressure as high as 1.06MPa, it is the world's deepest undersea tunnel.
- Tunnelling in mix-ground highly demands on shield tunnelling technology.
- The implementation of a fully prefabricated assembly process has significantly reduced the risk of personnel safety control, accelerated the construction schedule, achieved green construction and effectively improved the level of construction of the tunnel's internal structure.

Shenzhen Huangmugang Integrated Transport Hub Project

Huangmugang hub project is located in the northeast of Futian District of Shenzhen, in the center of Shenzhen city and the main traffic road. The surrounding environment is really complex, including rail transit, road traffic and underground space engineering. The project is based on the design concept of "metro-city integration" and is designed to realize the integration of transportation, function and space with international standard.



Project Features

- More than 600 pipelines need to be relocated with great difficulties.
- The structure column of Line 24 metro station adopts large inclination V-shaped steel column construction, which is difficult to install and position.
- The existing station of this project is the largest volume renovation project in China, which is extremely difficult to organize.



The TBM Tunnel Project of the Guangzhou-Dongguan-Shenzhen Intercity Railway

With a designed speed of 160km/h, the 14.5km TBM Tunnel Project of the Guangzhou-Dongguan-Shenzhen Intercity Railway is located in the central part of Shenzhen city. Constructed by cutting and covering and TBM methods with the largest diameter among tunnels under construction in Shenzhen rail transit. The construction started in 2021 and is expected to be completed in 2026.

Project Features

- It is one of the most challenging TBM tunnel projects both at home and abroad, which encounters complex geological conditions.
- Focus on TBM tunnelling parameters management and tool maintenance and replacement.
- It is difficult to control the safety of 28 risk sources, such as densely crossing expressway, metro stations and sections, high-speed railways and old communities.



Mingzhu Bay Underwater Immersed Tube Tunnel

The main line of the Mingzhu Bay Underwater Immersed Tube Tunnel is a dual-carriageway, six-lane trunk road with a design speed of 50km/h. The total length of the main tunnel line is 5.667km, consisting of a 4.262km cut and cover section on land and a 1.405km immersed tube underwater section. The phase I of the project involves 4.915km tunnel including 3.935km cut and cover section and 0.98km immersed tube section. The construction work started in November 2022 and is expected to be finished in September 2026.

Project Features

- Through the construction of smart site informatization and BIM system, it achieves the goal of "green site, smart site, fast construction" and sets the benchmark of smart construction application of the project.
- The project involves large scale deep foundation pits, prefabrication of oversized section pipe joints, reinforcement of underground strata in ultra-deep water and precise docking of immersed pipes and other important processes, which are difficult and highly technical.



Shenzhen Qianhai Integrated Transport Hub

Qianhai Integrated Transport Hub is one of the very rare large transport hub TOD projects totally located underground in China. The transport hub involves three metro lines (Line No.1, 5 and 11), and two intercity railways (the Guangzhou-Dongguan- Shenzhen Intercity Railway and the Hong Kong-Shenzhen Western Railway).

Project Features

- Be "seamlessly connected" with the high-end urban complex through three-dimensional public transportation to achieve a high degree of composite and intensive use of land.
- The underground space of the project is a deep foundation pit project near the sea, in which the hub interchange hall and underground space for property development is a 6-storey basement with a total length of 830m.
- BIM+CIM technology is applied to the whole process of design, construction and operation management.
- A strong cultural and art consulting unit Tsinghua Art Institute (QINGSHANG DISPALY) is introduced to carry out the project's cultural and art planning, spatial planning and subsequent implementation of cultural and art design consulting to enhance the project's cultural connotation, commercial value, urban vitality and sustainable development momentum.



SIGHTSEEING ROUTES

Shenzhen is known as one of the top ten garden cities in the world due to its long coastline and high forest coverage. It also enjoys the reputation of being China's shopping paradise because it is a bustling and integrated city that combines culture, tourism, holiday, leisure, gastronomy, convention, exhibition and business. We are committed to providing participants with a relaxing and enjoyable journey. Therefore, we offer a wide range of tour routes to enable participants and their companions to know Shenzhen and China better during their stay.

Route 1:

Cruise through the Greater Bay Area on the Hong Kong-Zhuhai-Macao Bridge route: Shekou Container Terminal - Inner Lindin Island - Hong Kong-Zhuhai-Macao Bridge

The cruise route starts and ends at Shenzhen's new business card, Shekou Cruise Home Port, and passes through the Shekou Cruise Home Port, Shekou Container Terminal, Inner Lindin Island, and crosses the Hong Kong-Zhuhai-Macao Bridge, which is one of the seven Wonders of the modern world. The entire route is a 3-hour voyage, in which people can take a cruise to see the SCT from afar, experience the mystery and splendor of the marine industry and enjoy the beautiful sunset and the Hong Kong-Zhuhai-Macao Bridge in the evening. The cruise offers a unique perspective of the "Shenzhen speed", allowing people to appreciate the value of the Greater Bay Area and the Maritime Silk Road, as well as the unique charm of Shenzhen.



Route 2:

Splendid China--A tour in Splendid China

Splendid China is the first cultural theme park in China and the largest miniature scenic spot in the world. The 82 miniature scenic spots are laid out in the form of a Chinese map, with more than 80 famous tourist attractions from all over the country in a 1:15 scale, including the well-known mountains, rivers, and strange peaks and rocks. Here you can take a step into history and travel around China in one day.



Splendid China now has 27 villages and 27 nations. Religious beliefs, language and characters, folk customs, music and dances, traditional costumes, festivals, special architecture and artists of the various ethnic groups are brought together, comprehensively displaying the unique cultural characteristics and mysterious humanistic customs of the Chinese nation. It is a wonderful blend of natural surroundings and ethnic customs, recreating in its original form scenes of the lives of our fellow ethnic minorities.



Route 3:

Enjoying Hakka culture and food in Gankeng Hakka Town

Gankeng Hakka Town rose from Gankeng Village during the Ming and Qing dynasties, and is a Hakka walled village with a long history, which is one of the top ten ancient villages in Shenzhen.



The town is a collection of local Hakka folklore, Hakka walled village architecture, Hakka folk art, Hakka traditional cuisine and Hakka rural scenery. In the town, you can watch Hakka folklore such as Kirin Dance and Dragon Dance, visit Hakka walled houses and other special residential buildings, and taste Hakka dishes such as ai ban, Salted Chicken, Hakka poon Choi, pork tripe stew chicken and Hakka Tofu. If you are interested in traditional Chinese culture and cuisine, a visit to a Hakka town is sure to be a memorable experience.



Route 4:

A tour full of Lingnan culture The Chen Clan Academy + Morning Tea in To To Kui + Building Overhang + Sai Kwan Mansion

Lingnan culture is the traditional culture of the Lingnan region of China. The Chen Clan Academy, the best-preserved and more ornately decorated of the traditional clan ancestral halls in Lingnan, covers an area of 15,000 square meters and has as many as 284 architectural sculptures, with thousands of years of Chinese cultural heritage embedded in every brick and tile. It is an excellent representation of Lingnan culture, especially of Lingnan architecture.



Lingnan cuisine originated more than 2,000 years ago and has evolved over thousand years to become one of the four major cuisines of China. Cantonese morning tea is a speciality of Lingnan cuisine, and a visit to the century-old To To Kui is a ritualistic way of life for many Cantonese people. Located in the old town of Guangzhou, To To Kui is a great place to stroll around and explore the style of Guangzhou Arcade building after having morning tea. You can also visit the relatively well-preserved buildings such as the Sai Kwan Mansion, which is surrounded by beautiful greenery. This tour will offer a personal experience of the daily leisure life of the local Cantonese people.



REGISTRATION & FEES

Registration Fees

Type	Early Registration Fee		Standard Registration Fee	On-site Registration Fee	The registration fee includes
	Before 1 Dec. 2023	1 Dec. 2023 - 30 Mar. 2024	1 Dec. 2023 - 30 Mar. 2024	After 30 Mar. 2024	
Full Registration	¥ 6,000	¥ 7,000	¥ 7,000	¥ 7,800	*Congress Materials
Students (under 35)	¥ 2,000	¥ 2,100	¥ 2,100	¥ 2,100	*Opening Ceremony
Category 3 Country	¥ 2,900	¥ 3,600	¥ 3,600	¥ 4,420	*Lunch and Coffee
First and Second authors	¥ 3,000	¥ 4,000	¥ 4,000	¥ 4,500	*Welcome Reception
Young Members (under 35)	¥ 3,000	¥ 4,000	¥ 4,000	¥ 4,500	*Technical Sessions
Paper Reviewing Experts	¥ 3,000	¥ 4,000	¥ 4,000	¥ 4,500	*Exhibition Area Visit

Other Registration	Accompanying Person	One-day ticket	Technical Visits	Tours and Sightseesings	Gala Dinner
	¥ 1,450	¥ 3,600	¥ 120	¥ 320~870	¥ 1,000

Other entitlements included in the registration fee are detailed on the official website

How to register and attend

1.Registration Website: www.wtc2024.cn

Through the official website of WTC2024 - click into the "REGISTRATION", the first time to enter needs to create an account, fills out and submits the application, verifies the email and enters the registration portal.

Please fill in the registration information in detail and make sure that you are ready to submit your application for participation.

2.Payment

After registration, you will be redirected to the payment page for direct online payment. In addition to online payment, we also support bank transfer.

Account Information

SWIFT: ABOCCNBJ190

BENEFICIARY BANK: THE AGRICULTURAL BANK OF CHINA, GUANGDONG, TAOJIN SUB-BRANCH

ADD: 8F, YIN ZHENG PLAZA, NO 338 HUANSHIDONG ROAD GUANGZHOU, P. R. CHINA

ACCOUNT: 44032301040023743

COMPANY: GUANGDONG SHUANGWEI CULTURE TECHNOLOGY GROUP CO., LTD

ADD: ROOM N2494, FLOOR3, XINGGUANGYINGJING, NO.117, SHUIYIN ROAD, YUEXIU DISTRICT, GUANGZHOU.

REMITTANCE REMARKS: _____ (DELEGATE'S FULL NAME or COMPANY NAME)

3.Contact us: registration@wtc2024.cn

EXHIBITION & FEES

Application Access

Access 1: The completed Sponsorship and Exhibition Reservation Form should be signed/stamped by the exhibitor representative and sent to the WTC2024 Organizing Committee via email (exhibition@wtc2024.cn).

Access 2: Through the official website of WTC2024 - enter "Sponsors & Exhibitors", fill in the form and submit the application.

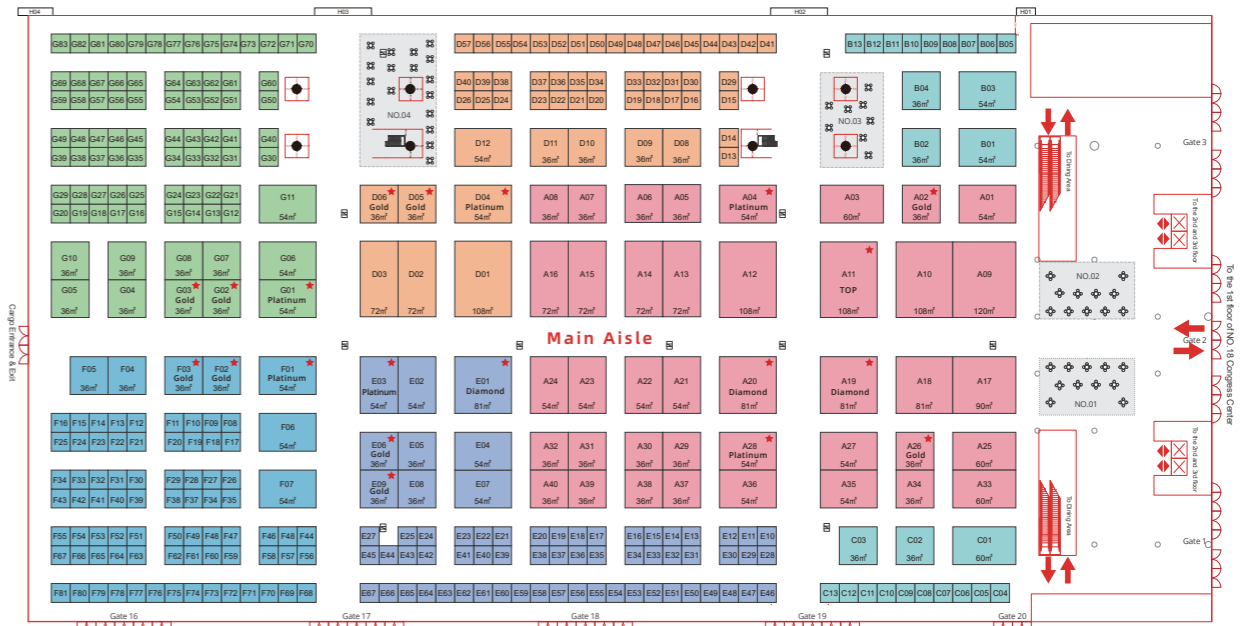
- ☑ The application will be answered by email or phone within 1-2 working days after your submission.
- ☑ All participation content is subject to the receipt of signed contract, we will provide you with contract documents upon receipt of reservation.
- ☑ After signing the contract, please make your payment on time as required by the contract.

Booth Rental

Booth type	Cost	Scale
Exhibition Booth	¥ 40,000 / booth	9 m ² (3m×3m) /booth, with 500 watts power supply
Exhibition Space	¥ 3,500 /m ²	Order from 36 m ² , open space only without furnishings

Exhibition Floor Plan

Area: 20,000m² Venue: Hall 17 in Shenzhen World Exhibition & Convention Center



Exhibitor Category

- A Selected Booth
- E Tunnel Construction
- F Tunnel Equipment, Operation & Maintenance, Software
- ☕ Coffee Break Area
- B Scientific Research, Universities, Finance, Media
- D Design Planning and Consulting
- G Machine Tools, Machineparts, Materials and Measuring Instruments
- ★ Sponsorship Preferred

Note: The area not specially marked in the Exhibition Floor Plan is the Exhibition Booth (9 m², 3m*3m/each)

SPONSORSHIP OPPORTUNITIES

How to Join Sponsorship

1. Application Access

Access 1: The completed Sponsorship and Exhibition Reservation Form need to be signed / stamped by the sponsor / exhibitor representative and sent to WTC2024 Organizing Committee via email (exhibition@wtc2024.cn).

Access 2: Through the official website of WTC2024 - enter "Sponsors & Exhibitors", fill in and submit the application.

Organizing committee will reply by email or phone within 1-2 working days after your application is submitted.

2. Documents Requirements

- Sponsorship packages are limited in number and available on a first-come, first-served basis.
- Sponsors must be legal persons or other organizations legally registered and validly existing in the People's Republic of China and countries or regions outside the customs territory.
- All sponsorship and exhibiting content are subject to the receipt of the signed contract, and we will provide you with the contract documents upon receipt of your reservation.
- After signing the contract, please make your payment on time as required by the contract.

3. Contact us

If you have any request, please contact the Organizing Committee:

E-mail: exhibition@wtc2024.cn

4. Scan the QR code for the Exhibition and Sponsorship Brochure



Sponsorship and Exhibition Manual

Sponsorship

Sponsorship Opportunities	Top Customization	Diamond Customization	Platinum	Gold	Silver	Bronze
Exhibition Space	Customized Sponsorship Packages upon request.	Customized Sponsorship Packages upon request.	54	36	—	—
Exhibition Booth			—	—	2	1
Complimentary full registrations			12	6	3	1
Complimentary tickets for the Gala Dinner			3	3	2	—
Hanging flag inside Hall 17			1	—	—	—
Congress Notepads with logo (non-exclusive)			1	1	—	—
Company leaflets/flyers/giveaways (Provided by Company) in Congress Bags			2	1	—	—
Internal adv pages in the Pocket Program (full page)			1	1	—	—
Company logo on electronic posters			1	1	1	1
Company logo on conference room screen during break			1	1	—	—
Company logo on the Congress website (Welcome page) with a hyperlink to the sponsorship website			1	1	1	1
Highlighted listing of logo during the whole congress			1	1	1	1
Complimentary exhibitors' passes (Exhibition area use only)			6	4	3	2
			¥ 800,000	¥ 520,000	¥ 360,800	¥ 218,800



No.	Other Sponsorship	Cost
01	Congress Bag Insert	¥ 18,200
02	Internal Adv Full Page Inside the Pocket Program	¥ 25,500
03	Full Page Back Cover of the Pocket Program (exclusive)	¥ 35,000
04	Congress Leisure-Coffee Breaks	¥ 38,000
06	Congress Venue Signage (exclusive)	¥ 100,000
07	Congress USB (exclusive) with logo	¥ 109,600
08	Congress Wi-Fi Signage (exclusive)	¥ 109,600

No.	Venue Advertisements	Cost
09	Sticker Pictures on Both Sides of the Entrance of Hall 17	¥ 12,000
10	Banners on Both Sides of the Login Lobby	¥ 30,000
11	Hanging Flag Inside Hall 17	¥ 30,000
12	Column Screen in Login Lobby	¥ 55,000
13	Banners on Both Sides of No.18 Conference Center Entrance	¥ 100,000
14	Banners on Both Sides of the Entrance of Hall 17	¥ 100,000
15	LED Screen in Login Lobby	¥ 110,000

For sponsorship details or special requests, please contact the Organizing Committee.

E-mail: exhibition@wtc2024.cn

Sponsorship & Exhibition

✉ E-mail: exhibition@wtc2024.cn

Paper Submission

✉ E-mail: wtc2024@tunnelcenter.cn

Airticket, Accommodation and Meals

✉ E-mail: service@wtc2024.cn

Media Cooperation Consultation

✉ E-mail: media@wtc2024.cn

In order to provide participants with a better experience, WTC2024 Professional Congress Organizers will endeavour to provide personalized services to participants and exhibitors during WTC2024. Translation, car rental, hotel and meeting room booking and other services are included. If you have any requests for personalized services, please send your requirements to [service@wtc2024.cn] for further communication.